



1 Bed

Flat - Purpose Built

Prince Road

South Norwood

Asking price

£182,000

Leasehold

- Newly decorated One bedroom purpose built flat
- Second floor accommodation
- Storage heating system
- Entry phone system
- Off street parking
- 164 year lease
- Ideal for Selhurst or Norwood Junction Station
- We hold keys
- View now
- 10 mins to central Croydon



Prince Road
South Norwood
London
SE25 6NW

Situated on Prince Road in the vibrant area of South Norwood, this recently decorated top floor penthouse flat offers a delightful living space for those seeking comfort and convenience. Spanning an impressive 614 square feet, the property features a spacious reception room that invites relaxation and social gatherings, alongside a large double bedroom that promises restful nights.

Its prime location is a significant advantage, being just a short distance from Selhurst Station, which provides excellent transport links. A mere ten-minute bus ride will take you to the bustling heart of central Croydon, where a variety of shops and amenities await.

This property is particularly appealing to first-time buyers, offering a long lease and the added benefit of private parking to the rear, a rare find in urban living. With its practical features, this flat presents an ideal opportunity for those looking to establish their first home in the local community. Don't miss the chance to make this lovely penthouse your own.

Entrance

Communal entrance Entry phone system.

London Borough Of Croydon. Band B £1840.93

Entrance hall

Front door. Storage cupboard. Storage heater.

Reception room

22'4 x 12'1

Casement windows to rear. Wall mounted storage heater.

Carpet as laid. Eaved ceiling.

Kitchen

13'10 x 5'11

Velux window. Eaved ceiling. Built-in oven and hob. Base units with work surfaces over. Stainless steel single drainer sink unit. Space for washing machine an fridge/freezer.

Bedroom

19'1 x 11'6

Casement window to rear. Storage heater. Carpet as laid.

Bathroom

Skylight window. Panelled bath. Pedestal wash hand basin.

Low level wc.

Parking

Allocated parking to rear.

Gardens

Communal grounds.

Tenure

"We are advised by the vendor(s) that the tenure is Leasehold with 164 years remaining, Service Charge and ground rent to be advised".

AUTHORITY



1



1

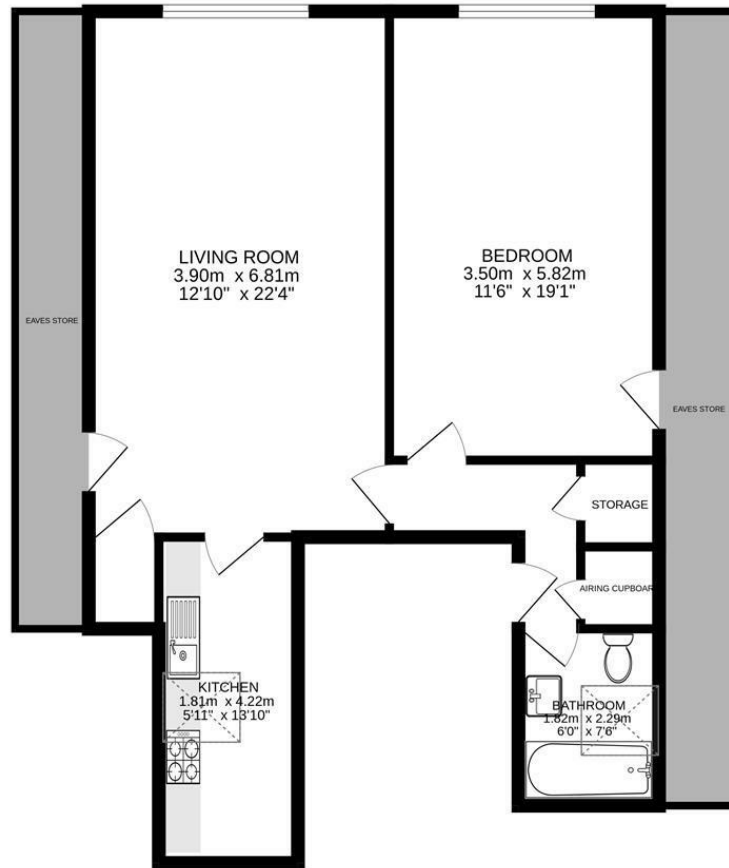


1



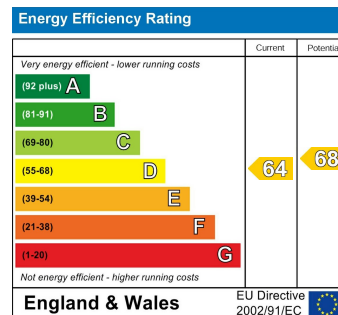
D





2nd floor
65.5 sq.m. (705 sq.ft.) approx.

TOTAL FLOOR AREA : 65.5 sq.m. (705 sq.ft.) approx.
Measurements are approximate. Not to scale. Illustrative purposes only.
Made with Metropix ©2025



CONTACT

5 High Street
London
SE25 6EP

E: Info@northwoods.co.uk
T: 020 8653 3377
northwoods.co.uk

